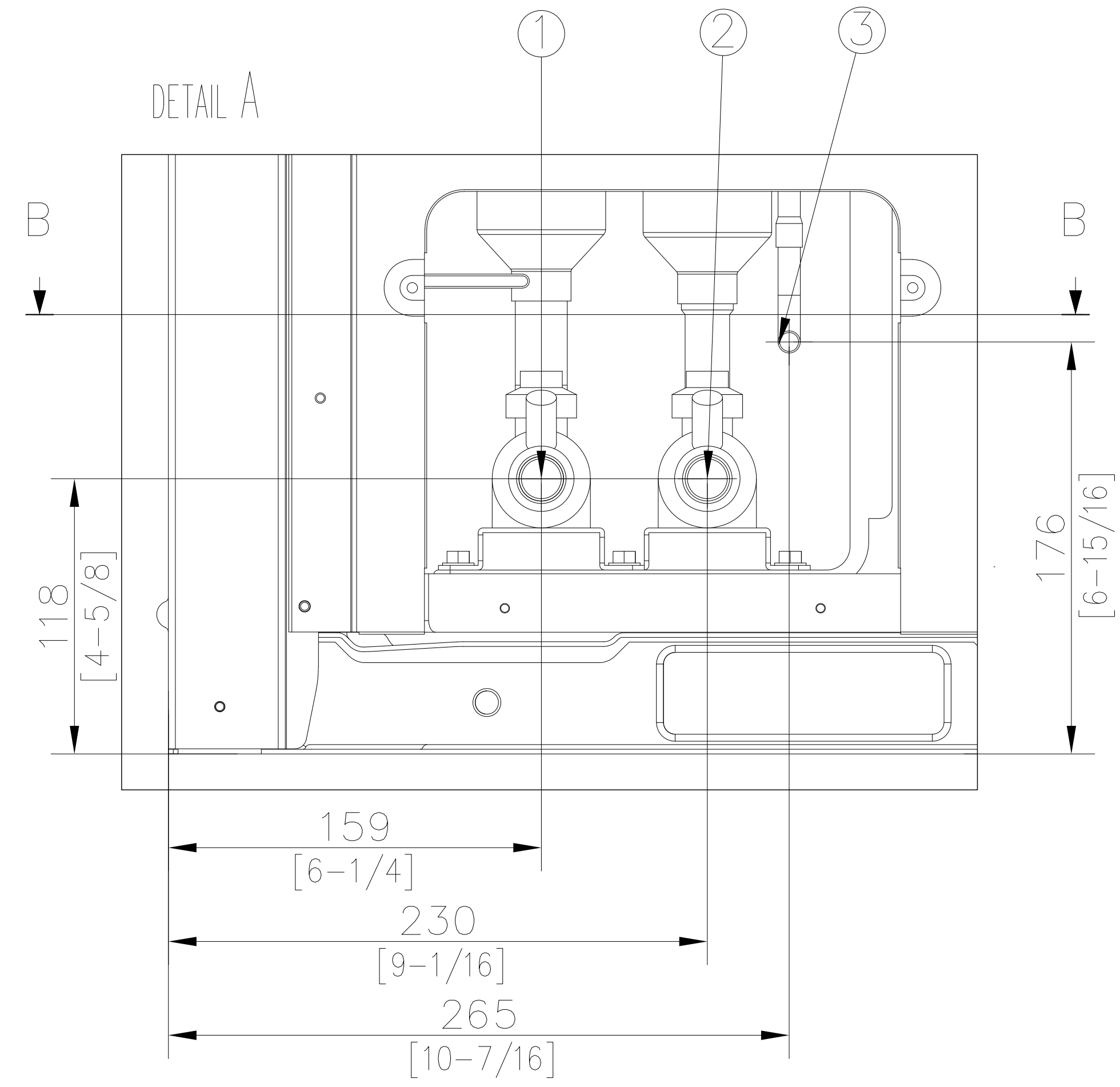
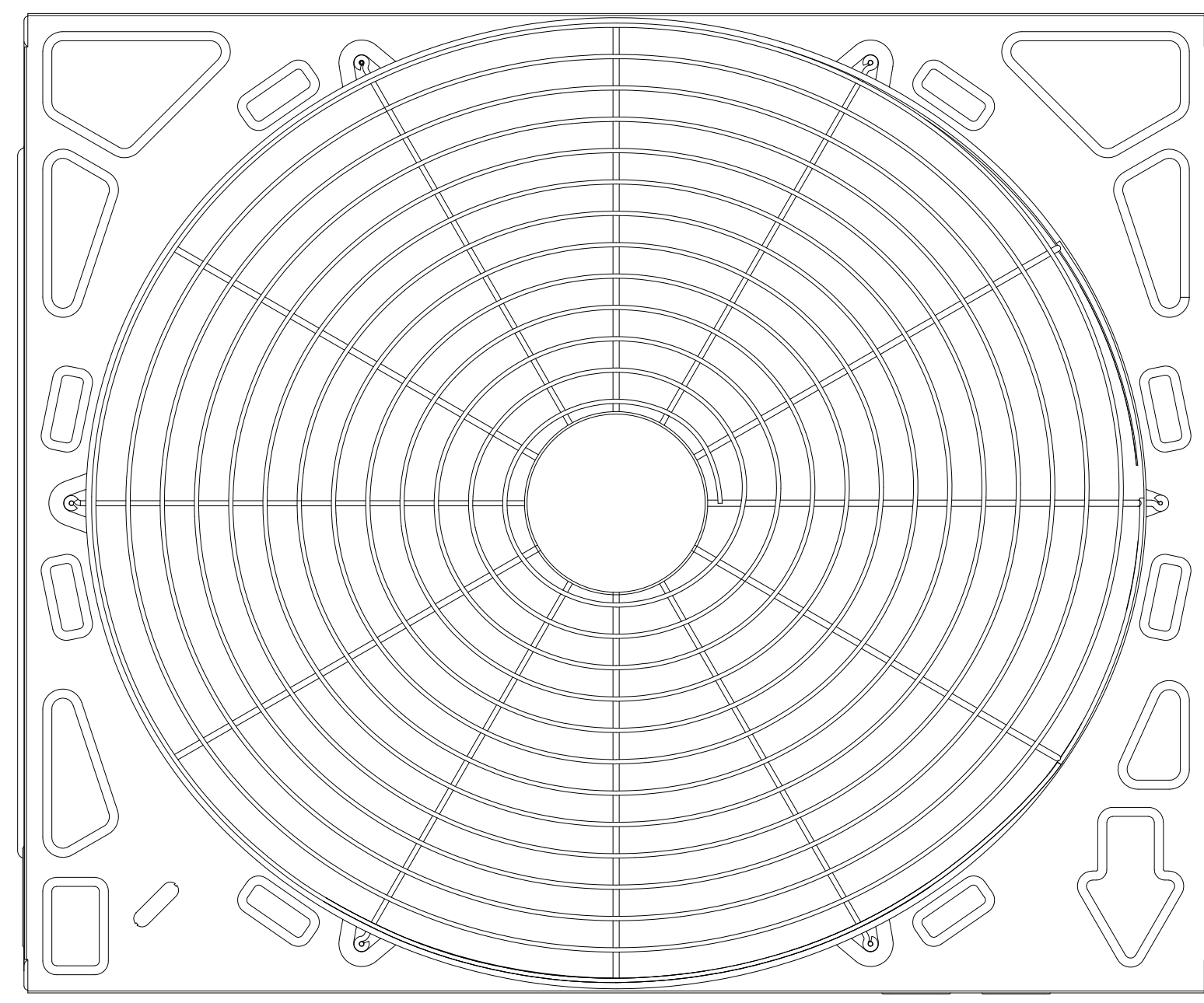
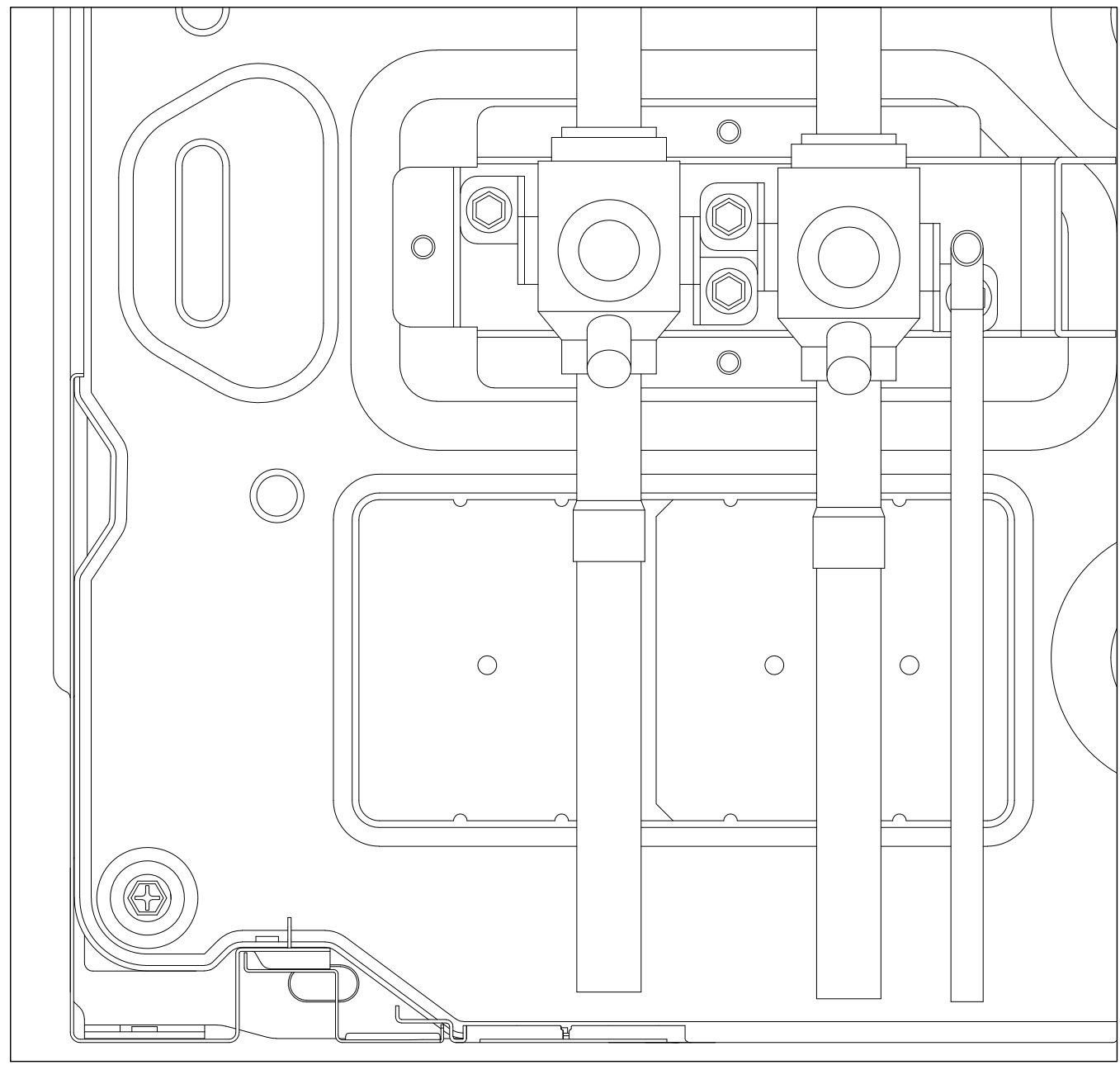


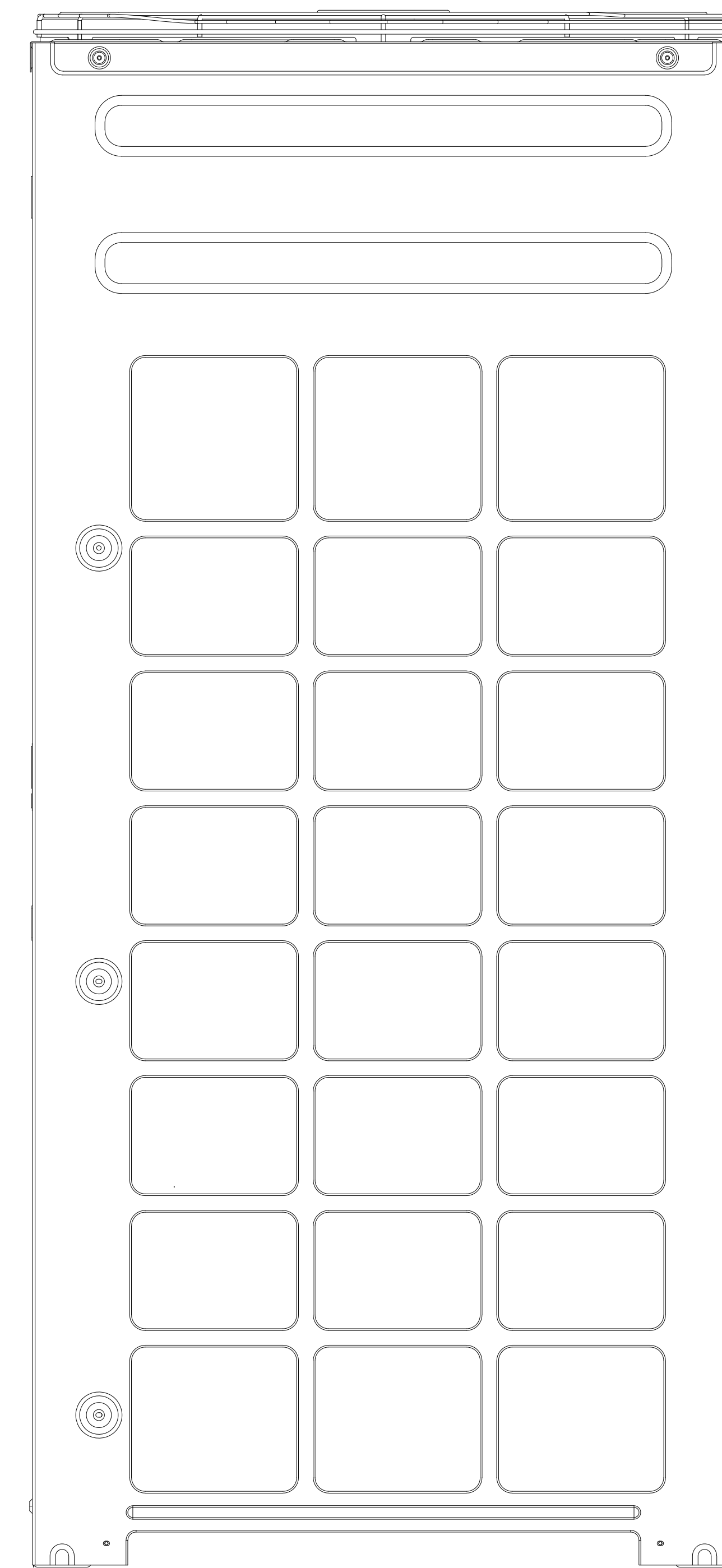
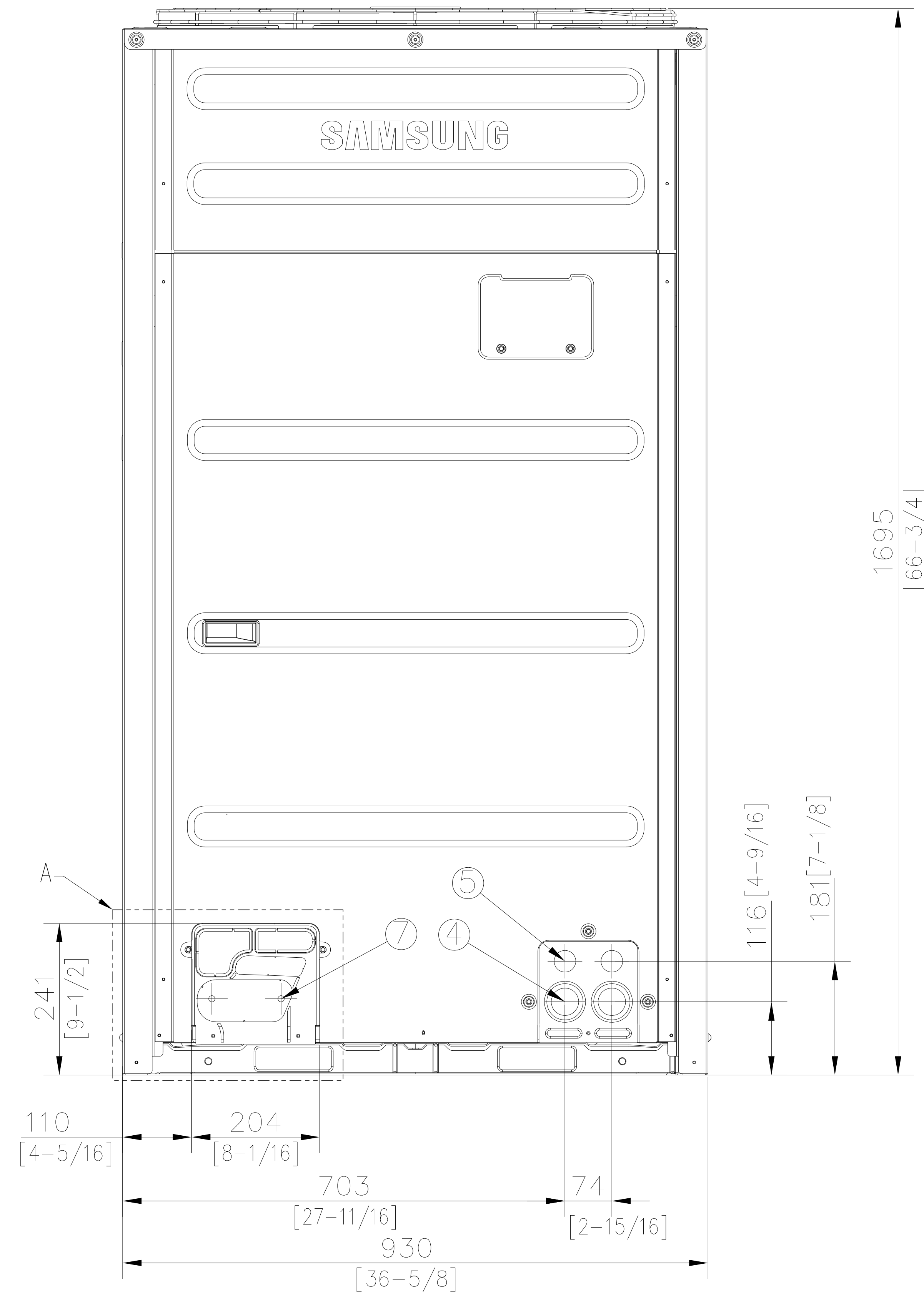
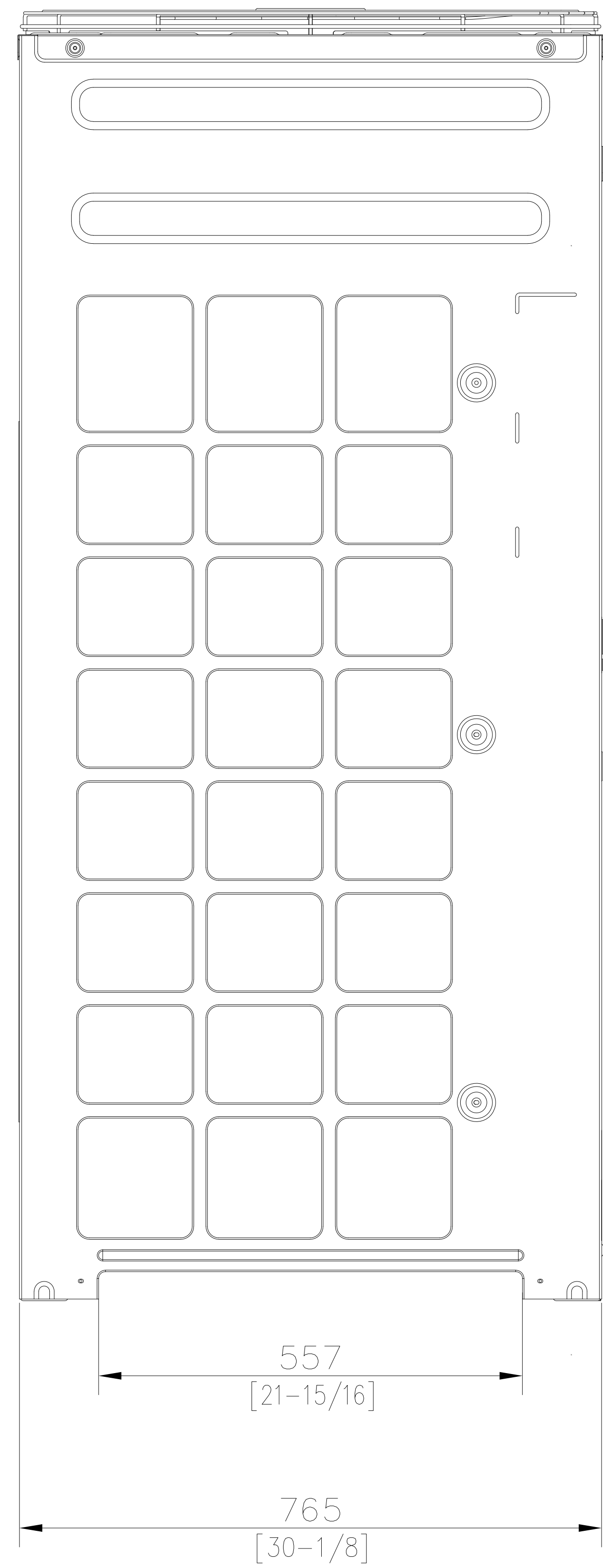
SECTION B-B



NOTE

1. Detail A and SECTION B-B indicate the dimension after fixing the attached piping.
2. Item 3-7 : Knock-out hole
3. View C indicate the dimension of knock-out hole(bottom)
4. Pipe [Φ , mm(inch)] : Brazing connection

| HP | Liquid pipe | Low Pressure Gas pipe | High Pressure Gas pipe |
|----|-------------|-----------------------|------------------------|
| 8 | 9.52(3/8) | 19.05(3/4) | 15.88(5/8) |
| 10 | 9.52(3/8) | 22.22(7/8) | 19.05(3/4) |
| 12 | 12.70(1/2) | 28.58(1-1/8) | 19.05(3/4) |
| 14 | 12.70(1/2) | 28.58(1-1/8) | 22.22(7/8) |
| 16 | 12.70(1/2) | 28.58(1-1/8) | 22.22(7/8) |
| 18 | 15.88(5/8) | 28.58(1-1/8) | 22.22(7/8) |
| 20 | 15.88(5/8) | 28.58(1-1/8) | 28.58(1-1/8) |
| 22 | 15.88(5/8) | 28.58(1-1/8) | 28.58(1-1/8) |
| 24 | 15.88(5/8) | 34.92(1-3/8) | 28.58(1-1/8) |
| 26 | 19.05(3/4) | 34.92(1-3/8) | 28.58(1-1/8) |



VIEW C

